



GIVING BACK IN GRATITUDE

Camp-Out For Hunger Food Drive



Each year, **Galfand Berger** employees begin the holiday season by donating to 93.3 WMMR's annual Camp Out for Hunger campaign. The week-long event is the largest single-location food drive in the United States, with proceeds benefitting Philabundance, a non-profit food bank that serves Philadelphia and the Delaware Valley. Not only is the event the largest of its kind, but it is also a week-long live broadcast that features local and national celebrities, television personalities, athletes, and other hunger heroes who join the campaign in hopes of abolishing hunger and food insecurity.

[Read our blog to learn more.](#)

THANKSGIVING SAFETY TIPS

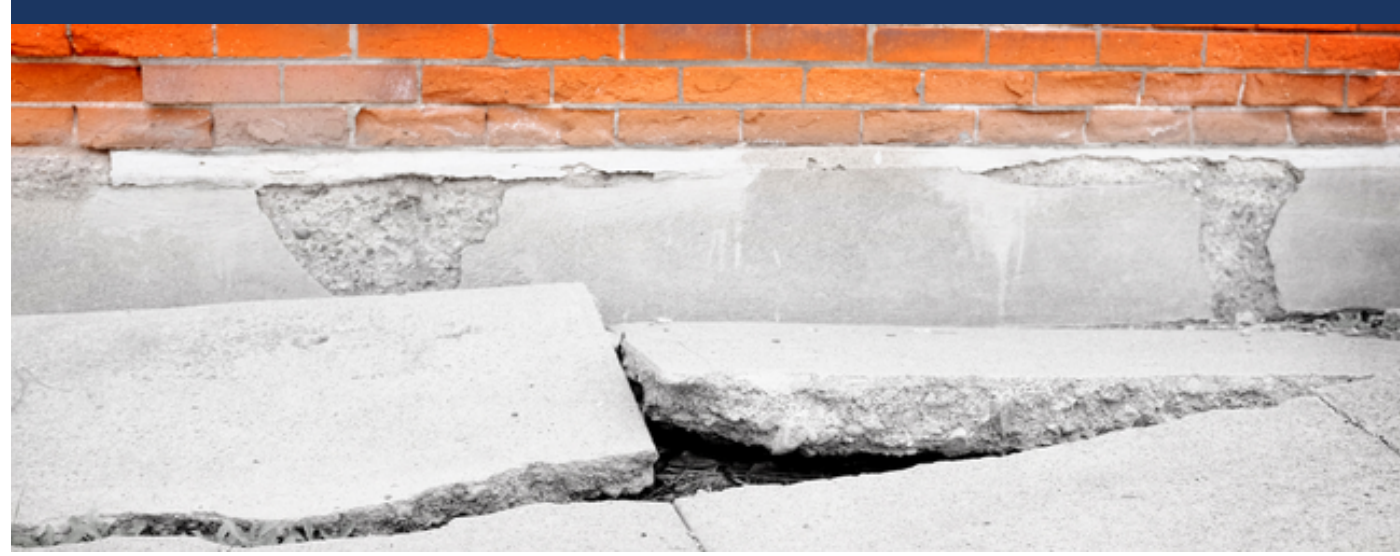


Celebrating Thanksgiving Safely

Each year for the past five consecutive years, more than 50 million Americans have hit the road to travel to see their friends and families for Thanksgiving. The holiday brings with it plenty of joy and cheer – and let's not forget, there is no shortage of delicious food, either – but it is still important to take a few precautions to ensure that you and your loved ones have safe and fun time.

[Read our blog to learn more.](#)

TRIP AND FALL ACCIDENTS



What Are Common Types of Premises Liability Accidents?

Under Pennsylvania's premises liability laws, private and public property owners are required to make a reasonable effort to keep their indoor and outdoor spaces safe for visitors. Premises liability laws exist because all kinds of properties require ongoing vigilance, supervision, and maintenance in order to avoid accidents and preventable injuries. When a property owner, landlord, or manager of either a residential or commercial property is negligent and causes an injury, the injured party may seek compensation for damages and loss.

[Read our blog to learn more.](#)



Who Is Liable if I Have Been Injured at My Apartment?

Apartment accidents can happen for a wide variety of reasons, and in many cases, are the result of landlords failing to fulfill their obligation to keep the premises safe for all tenants, guests, and visitors. Under Pennsylvania law, private individuals and businesses that are landlords can be held liable for accidents and injuries at rented properties, including apartment complexes, commercial buildings, duplexes, and vacation rentals. Pennsylvania premises liability law takes several factors into consideration when it comes to liability.

[Read our blog to learn more.](#)

[To learn more about Premises Liability, click here.](#)

MEDICAL MALPRACTICE



Pennsylvania Supreme Court Changes State's Medical Malpractice Rules

Recently, the **Pennsylvania Supreme Court** ruled in favor of adding new provisions to the state's existing **medical malpractice** rules. The Court's decision is a major win for medical malpractice victims, who will now be able to sue negligent healthcare providers for damages in areas where they regularly conduct business and not exclusively in the jurisdiction where the negligence occurred. The Court approved these changes at the end of August; after two years, it will reassess its ruling to determine if any changes need to be made.

[Read our blog to learn more.](#)

[To learn more about Medical Malpractice, click here.](#)

PRODUCT SAFETY



CPSC Updates Mandatory Federal Safety Standard to Prevent Furniture Tip-Overs

Recently, the Consumer Product Safety Commission (CPSC) updated a new federal mandatory safety standard for clothing storage units to limit injuries and deaths associated with tip-overs. Children face the highest risks for sustaining this type of injury, which often involves clothing storage units like dressers, chests, bureaus, armoires, wardrobes, chests of drawers and door chests. Every year, children are killed in furniture tip-over incidents.

[Read our blog to learn more.](#)



CPSC: The Deadly Dangers of Hoverboards, E-Scooters and E-Bikes

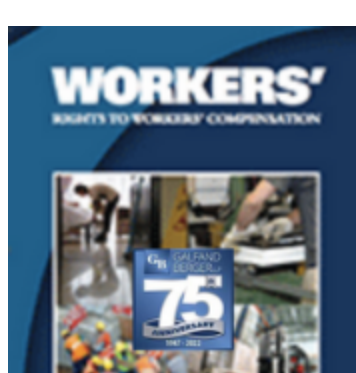
According to a recent press release from the **Consumer Product Safety Commission (CPSC)**, e-bike, e-scooter, and hoverboard injuries and fatalities are on the rise. In commemoration of last month's National Fire Prevention Week, the commission is reminding consumers to be cautious and safe while using them. E-scooters, e-bikes, and hoverboards have become increasingly popular in recent years. Used by teens and adults alike, individuals favor these micromobility products for commuting to school or work or simply for having fun.

[Read our blog to learn more.](#)

[To learn more about Products Liability, click here.](#)

WORKERS' COMPENSATION

Understanding Your Rights



This book clearly and concisely explains injured workers' rights and responsibilities under the Pennsylvania Workers' Compensation Act. It was written with the hope all injured workers in Pennsylvania will receive the rights promised to them in the event of a work-related injury.

[Download your copy today.](#)

GALFAND BERGER PROVIDES USEFUL RESOURCES AND VIDEOS FOR MANY OF OUR PRACTICE AREAS.

To learn more about them, visit www.galfandberger.com/resources or watch our videos, here: www.galfandberger.com/videos



Call us today at **800-222-8792** or [contact us online](#) to schedule a free, private consultation with our experienced legal team.

If you or a loved one has been injured, we may be able to help get the justice and compensation you and your family deserve. As always, there is no fee unless we recover for you.

JOIN US ON SOCIAL MEDIA



Be sure to follow all our social channels for useful legal information, updates, and firm news!

