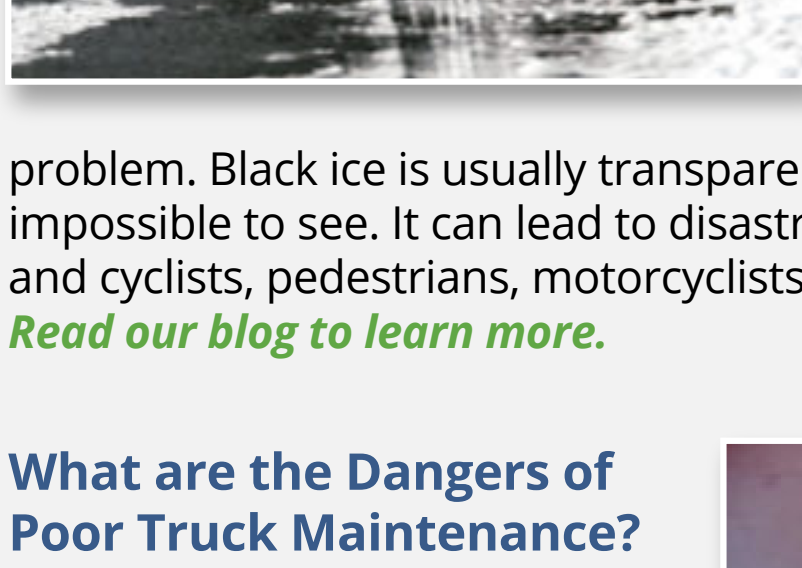


Helping Injured People Since 1947

AUTO ACCIDENTS

Dangerous Driving Conditions: Black Ice

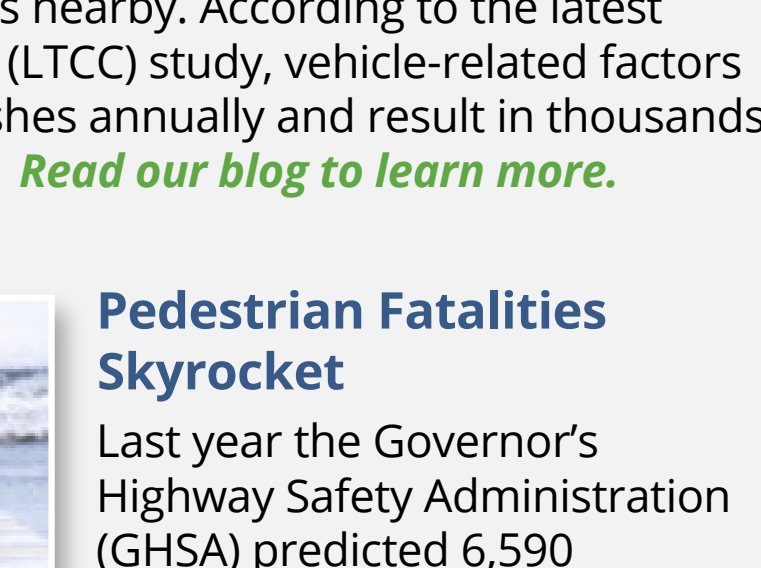
We all know that in the colder months, roadway weather conditions can become especially treacherous. Black ice, which is a thin coating of clear ice that sits on the surface of the road, is a big part of the

problem. Black ice is usually transparent, which means that it is impossible to see. It can lead to disastrous accidents between drivers and cyclists, pedestrians, motorcyclists, or other individuals on the road.

[Read our blog to learn more.](#)

What are the Dangers of Poor Truck Maintenance?

Proper truck maintenance is essential to preventing accidents caused by vehicle-related factors. The dangers of poor truck maintenance include worn tires, faulty brakes, fuel system problems, and unexpected decoupling of trailers. Truck breakdowns in high traffic areas create dangerous hazards for other vehicles nearby. According to the latest annual Large Truck Crash Causation (LTCC) study, vehicle-related factors cause more than 250 fatal truck crashes annually and result in thousands of accidents involving serious injury.


Pedestrian Fatalities Skyrocket

Last year the Governor's Highway Safety Administration (GHS) predicted 6,590 pedestrian deaths resulting from motor vehicle crashes in 2019, which is the highest number of fatalities

documented in 30 years. The agency was right, and there is no indication that the dangerous trend will reverse any time soon. In Philadelphia for example, the numbers continued to grow in 2020. In fact, they increased by a startling 88% and accounted for more than one-half of the total traffic-related fatalities for that same year. Similar reports have popped up across the country, with the American Automobile Association (AAA) reporting that some states have experienced increases in pedestrian fatalities as high as 90%.

[Read our blog to learn more.](#)

[To learn more about Auto Accidents, click here.](#)

FALL ACCIDENTS

Important Snow Shoveling Responsibilities

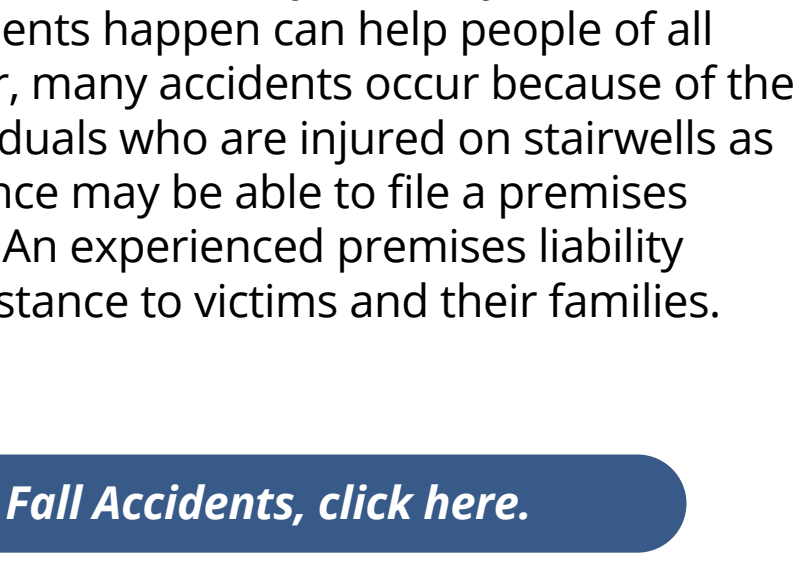
With yet another snowfall, it is important to know the rules that govern who is responsible for shoveling snow and clearing sidewalks. These rules vary based on where a person lives, but a citywide ordinance in

Philadelphia requires all homeowners, landlords, businesses, and even renters to remove snow from their sidewalks within six hours of an accumulation.

[Read our blog to learn more.](#)

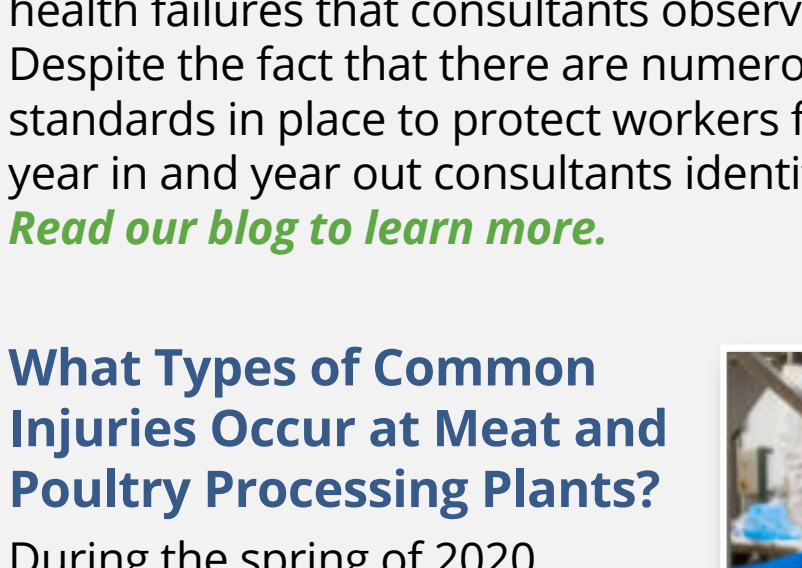
How Common are Stairwell Accidents?

According to a study published in the American Journal of Emergency Medicine (AJEM), stairwells are a common source of injury for people of all ages. Approximately 50 percent of the homes and apartments in the United States contain stairs. In addition, stairwell slip and fall accidents account for a significant percentage of serious injuries on jobsites. Understanding how stairwell accidents happen can help people of all ages avoid serious injury. However, many accidents occur because of the negligence of another party. Individuals who are injured on stairwells as a result of someone else's negligence may be able to file a premises liability claim to recover damages. An experienced premises liability lawyer can provide invaluable assistance to victims and their families.



[Read our blog to learn more.](#)

[To learn more about Fall Accidents, click here.](#)

WORKERS' COMPENSATION

Top Workplace Safety Hazards

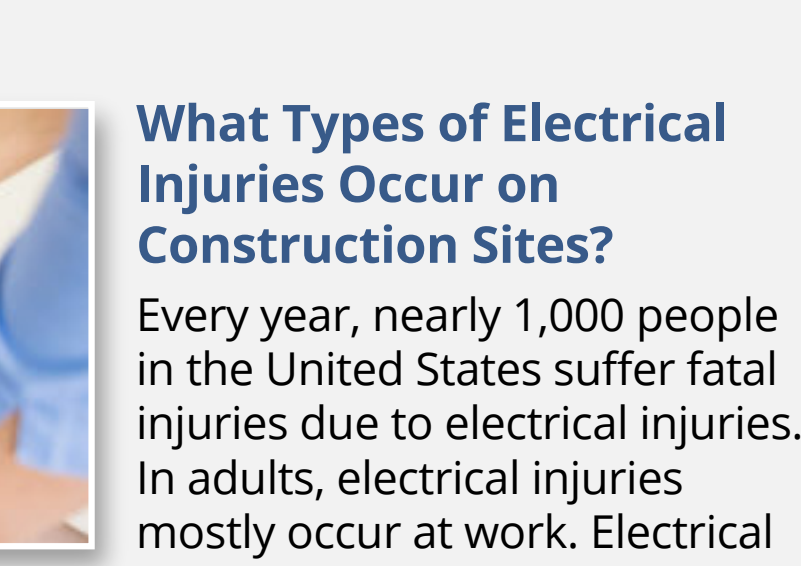
Each year, various worker safety and health agencies like the National Safety Council (NSC) and the Occupational Safety and Health Administration (OSHA) publish lists of the most common workplace safety and

health failures that consultants observe while performing jobsite audits. Despite the fact that there are numerous federal and statewide standards in place to protect workers from known industrial dangers, year in and year out consultants identify the same problems.

[Read our blog to learn more.](#)

What Types of Common Injuries Occur at Meat and Poultry Processing Plants?

During the spring of 2020, scientists noticed that beef, pork, and poultry processing plants were emerging as hot spots for Coronavirus (COVID-19) outbreaks. Workers in these plants were spreading COVID-19 at more than twice the national rate, according to a report in Bloomberg Law. However, catching an infectious disease is just one hazard that these employees face daily.



[Click here to read our blog.](#)

What Types of Electrical Injuries Occur on Construction Sites?

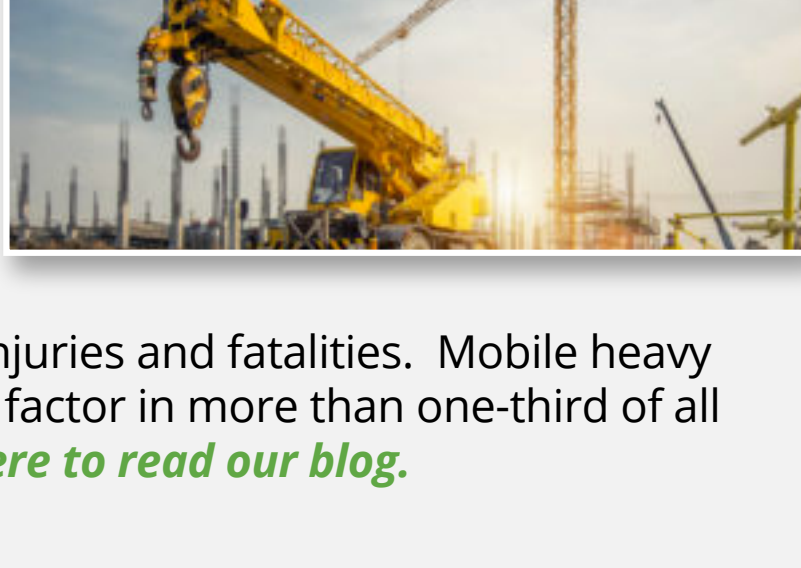
Every year, nearly 1,000 people in the United States suffer fatal injuries due to electrical injuries. In adults, electrical injuries mostly occur at work. Electrical injuries are the third leading cause of fatalities among construction workers. The types of construction accidents involving electrical injuries include the following:

- Flash burns caused by an arc flash
- Burns from flames that arise when an arc flash ignites a worker's clothing
- Damage to the heart, central nervous system, and/or other internal organs caused by contact with high voltage
- Injuries due to falls when an electric shock knocks a worker off balance.

[Click here to read our blog.](#)

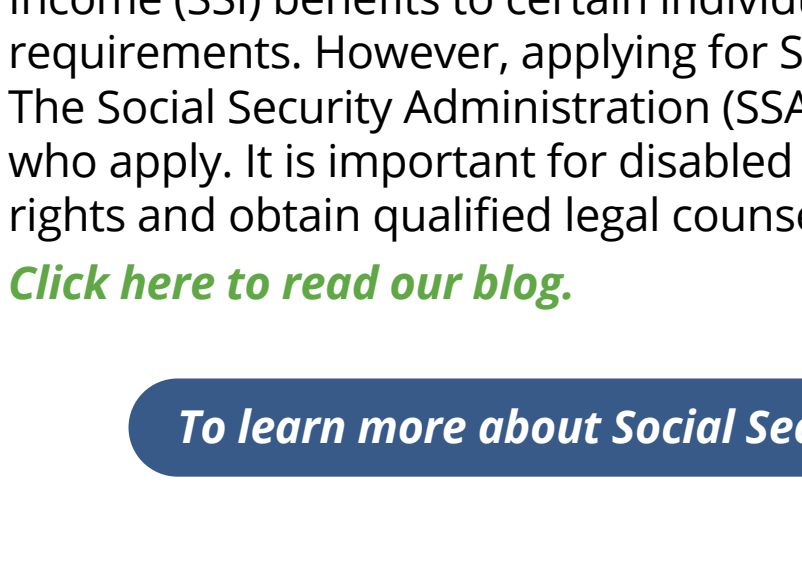
What are the Different Types of Heavy Machinery Accidents?

Heavy machinery is widely deployed in construction, mining, manufacturing, and warehousing. Studies show that occupational accidents involving heavy machinery account for a significant percentage of serious injuries and fatalities. Mobile heavy equipment, including trucks, are a factor in more than one-third of all construction site fatalities.



[Click here to read our blog.](#)

[To learn more about Workers' Compensation, click here.](#)

SOCIAL SECURITY DISABILITY

Applying for Social Security Disability Benefits with the Help of a Lawyer

Workers disabled because of a medical condition may be entitled to receive Social Security Disability Insurance (SSDI) benefits. Also available are Supplemental Security

Income (SSI) benefits to certain individuals who meet income requirements. However, applying for SSDI and SSI can be complicated. The Social Security Administration (SSA) denies benefits to most people who apply. It is important for disabled individuals to understand their rights and obtain qualified legal counsel when applying for benefits.

[Click here to read our blog.](#)

[To learn more about Social Security Disability, click here.](#)

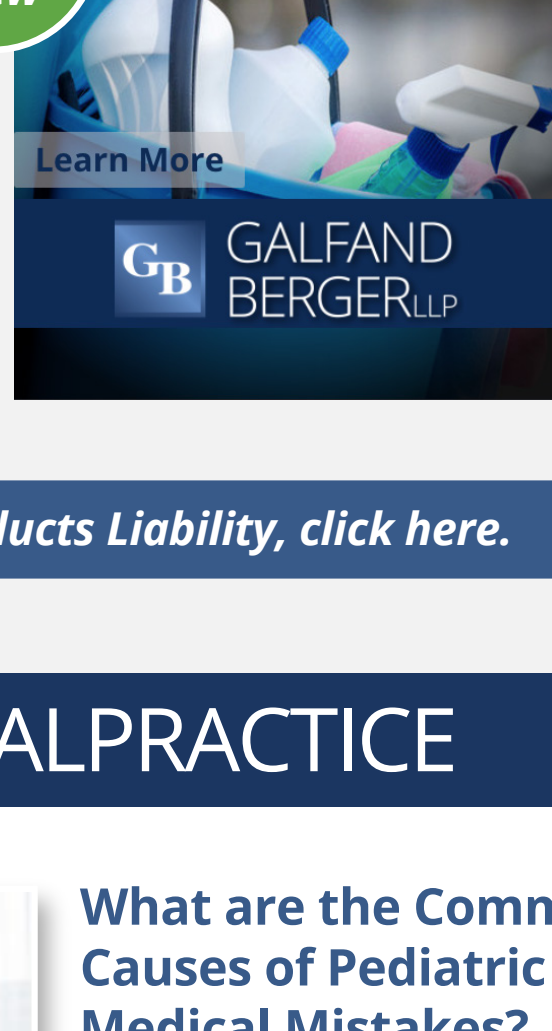
PRODUCTS LIABILITY

Defective Snowblowers Recalled Due to Amputation Hazard

On February 17, the Consumer Product Safety Commission (CPSC) posted a notice regarding the decision by the Toro Company to recall thousands of its Toro Max

Snowthrowers due to an amputation hazard. The product has been deemed hazardous because the auger can fail to disengage when the control lever is released. The company received five reports from customers regarding the failure of the auger to disengage properly.

[Click here to read our blog.](#)

Web Stories


[To learn more about Products Liability, click here.](#)

MEDICAL MALPRACTICE

What are the Common Causes of Pediatric Medical Mistakes?

According to Healthy Children, approximately 30 million children go to the emergency room for various illnesses, injuries, or other medical complaints annually. While emergency care is sometimes necessary, it can also be quite scary: Johns Hopkins estimates that 10% of all U.S. deaths are the result of medical errors and that 250,000 individuals die every year from preventable mistakes.

[Read our blog to learn more.](#)

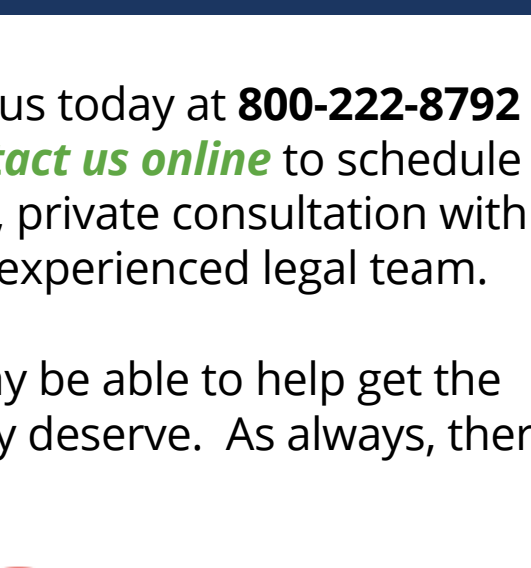
[To learn more about Medical Malpractice, click here.](#)

AUTO INSURANCE

Understanding Your Policy & Rights

This easy to use guide helps explain Pennsylvania Auto Insurance. Learn what kind of coverage you should have and how to best protect yourself if you are involved in an accident.

[Download your copy today.](#)



GALFAND BERGER PROVIDES USEFUL RESOURCES AND VIDEOS FOR MANY OF OUR PRACTICE AREAS.

To learn more about them, visit: www.galfandberger.com/resources or watch our videos, here: www.galfandberger.com/videos