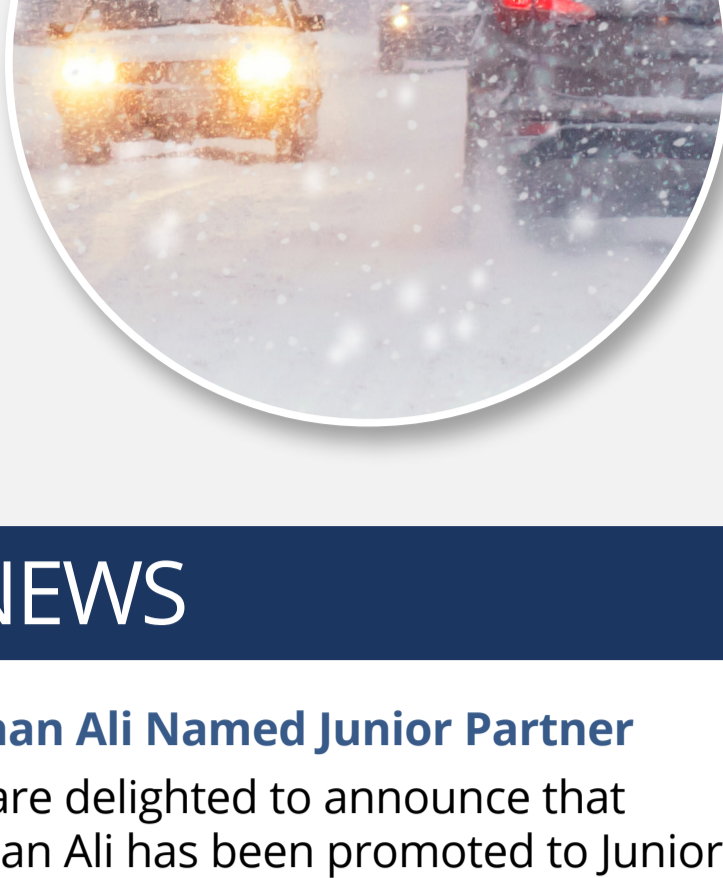
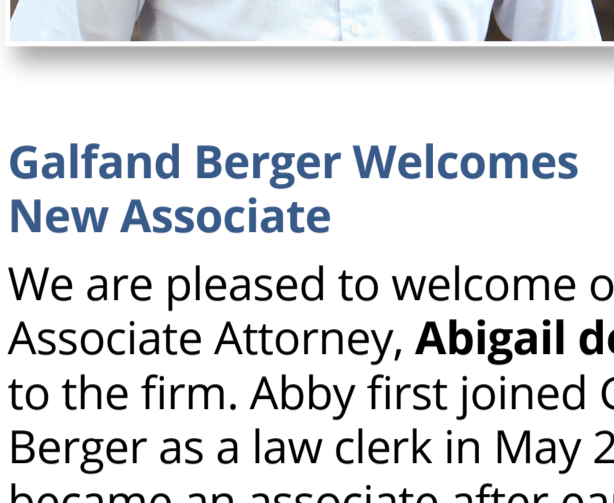


Helping Injured People Since 1947

Tip of the Month
SAFETY TIPS FOR WINTER DRIVING

- Inspect tires
- Check the battery
- Allow for extra travel time
- Remove all snow and ice from the car
- Slow down
- Stay alert
- Do not leave a disabled vehicle


FIRM NEWS

Farhan Ali Named Junior Partner

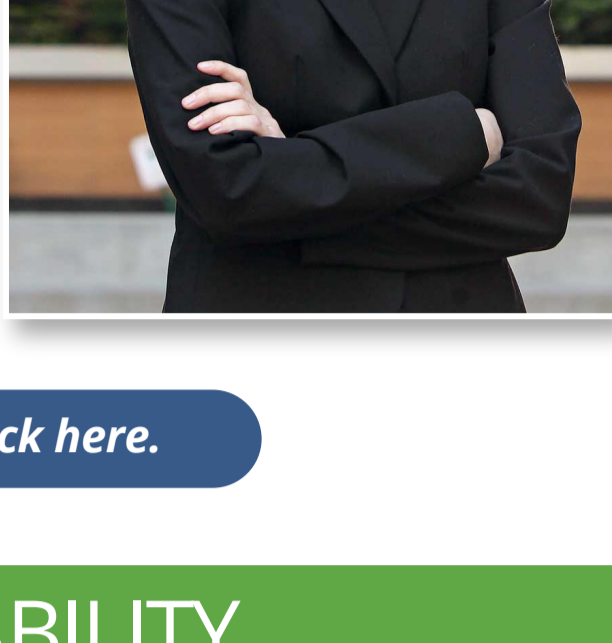
We are delighted to announce that Farhan Ali has been promoted to Junior Partner at our firm. Since he first joined Galfand Berger, Farhan has fought to secure the rights of injured individuals and has upheld our firm's mission of advocating for the full and just compensation of accident victims.

[Click here to learn more.](#)

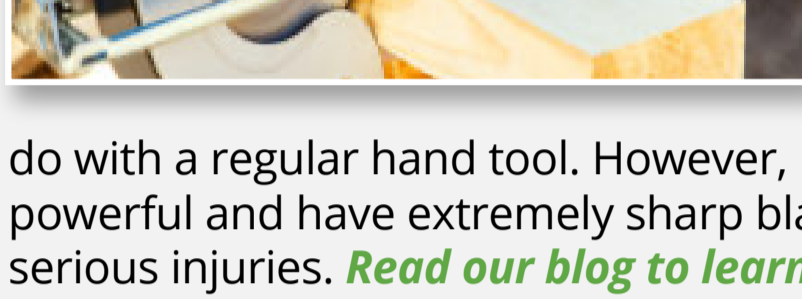
Galfand Berger Welcomes New Associate

We are pleased to welcome our newest Associate Attorney, **Abigail de Uriarte**, to the firm. Abby first joined Galfand Berger as a law clerk in May 2019. She became an associate after earning her Juris Doctorate from Temple University's James E. Beasley School of Law. Before earning her law degree, Abby received her undergraduate degree in political science from Bard College and a graduate degree in government from Cornell University.

[Read our blog to learn more.](#)



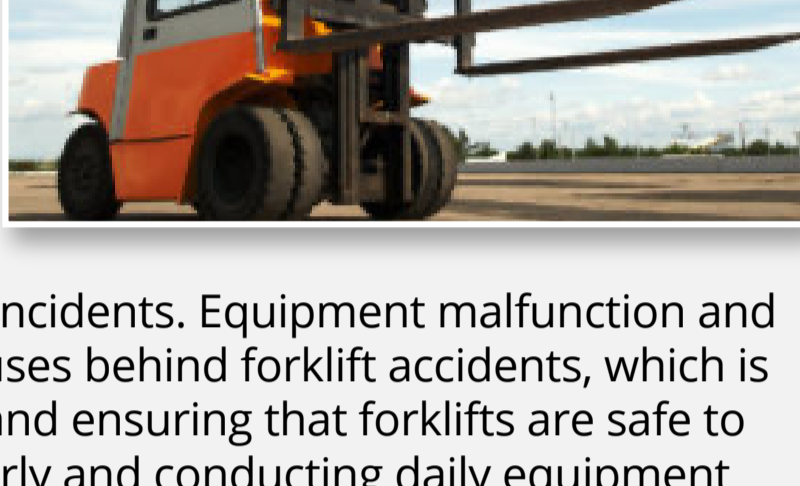
[For more firm news, click here.](#)

PRODUCTS LIABILITY

What are the Dangers of Defective Power Tools?

Power tools are used every day in the workplace and in the home. Construction workers and homeowners alike use various types of power tools to complete a wide range of tasks that they would not be able to do with a regular hand tool. However, many of these tools are very powerful and have extremely sharp blades or points that can cause serious injuries. [Read our blog to learn more.](#)

More Than 8,000 Forklift Injuries Annually

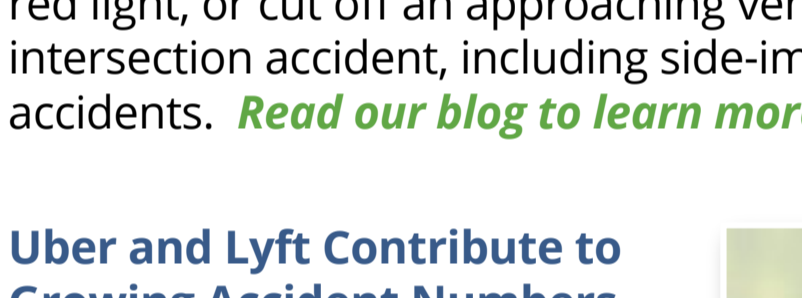
According to the National Safety Council (NSC), forklifts were the source of 79 work-related deaths and 8,140 nonfatal injuries in 2019. Forklift injuries and deaths most commonly result from transportation incidents or contact with object or equipment incidents. Equipment malfunction and operator error are two leading causes behind forklift accidents, which is why providing employee training and ensuring that forklifts are safe to operate by inspecting them regularly and conducting daily equipment checks is key. [Read our blog to learn more.](#)


What Types of Injuries are Caused by Machinery Accidents?

Construction sites, busy warehouses, manufacturing plants are just a few examples of industries that require workers to use a range of tools and machinery in order to do their jobs. From table saws and nail guns to forklifts and compactors, these machines help workers complete tasks more quickly, efficiently, and safely when used properly. However, if employees are not properly trained, fail to follow the necessary safety precautions, or the machine malfunctions, it can cause devastating injuries. [Read our blog to learn more.](#)



[To learn more about products liability, click here.](#)

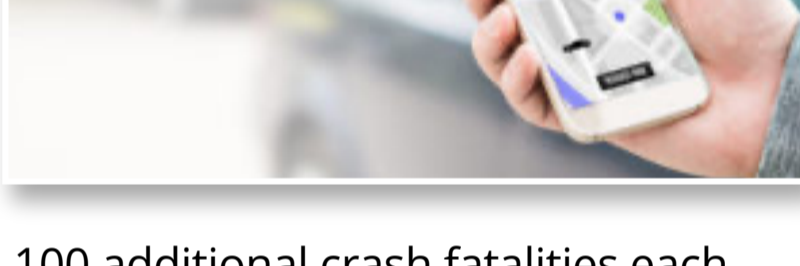
CAR ACCIDENTS

What Do I Need to Know About Intersection Car Accidents?

A busy intersection can be very dangerous if motorists do not pay close attention to traffic signals and other vehicles in the vicinity. In fact, according to the Federal Highway

Administration, more than half of all car accidents occur at or near intersections. Traffic lights, turn signals, stop signs, and posted speed limits help keep traffic moving safely, but when motorists try to beat a red light, or cut off an approaching vehicle, this can cause a serious intersection accident, including side-impact collisions or left-turn accidents. [Read our blog to learn more.](#)

Uber and Lyft Contribute to Growing Accident Numbers

According to a study from the University of Chicago and Rice University, popular rideshare services like Uber and Lyft are directly linked to growing rates of annual traffic deaths and injuries. Overall, ridesharing services have caused as many as 1,100 additional crash fatalities each year. Data shows that higher levels of traffic congestion and reduced access to public transportation both play a large role in the concerning uptake in dangerous and deadly collisions. [Read our blog to learn more.](#)



[To learn more about car accidents, click here.](#)

MEDICAL MALPRACTICE

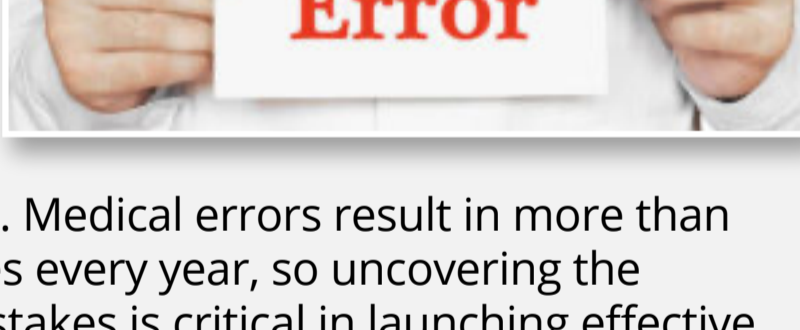
Amputations from Medical Negligence

Medical mistakes are a leading cause of disability and death in the United States. They can cause several different types of complications, but in some of the most serious of cases, these avoidable errors lead to the loss

of a limb. Medical malpractice is the legal cause of action that an injured individual can take after a healthcare provider's negligence and deviance from the accepted standard of care results in harm, such as an amputation. [Read our blog to learn more.](#)

The Most Common - and Deadly - Medical Mistake

According to a review of more than 335,000 medical cases, the most commonly observed medical mistake that causes severe or deadly complications in patients involves prescribing, dispensing, and giving medications and other treatments. Medical errors result in more than 250,000 deaths in the United States every year, so uncovering the common culprits behind these mistakes is critical in launching effective and widespread efforts to reduce patient harm that leads to preventable illnesses, injuries, and deaths. [Click here to read our blog.](#)



[To learn more about medical malpractice, click here.](#)

WORKERS' COMPENSATION AND WORKPLACE ACCIDENTS

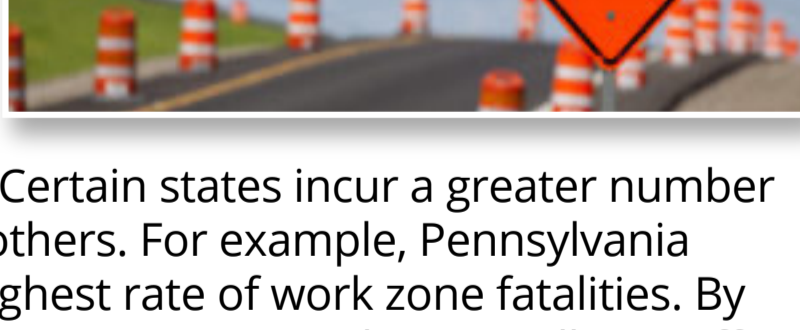
WORKPLACE HAZARD: Deadly Falls

According to the Bureau of Labor Statistic's (BLS) most recent workplace injury data, 880 workers died from slips, trips, and falls in 2019. Sadly, this number represents only a minuscule decrease from the

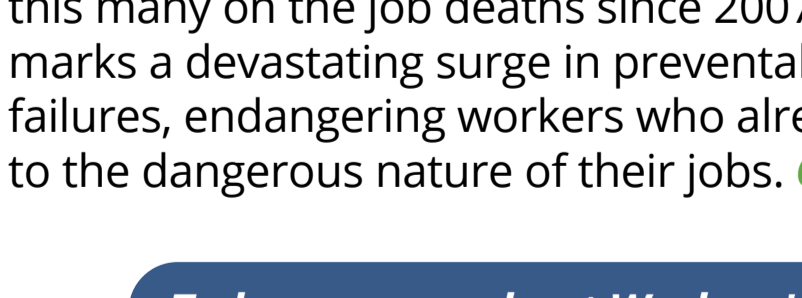
year before. Fatal falls are second only to transportation incidents when it comes to the leading causes of deadly workplace accidents. The figures make it clear that not enough is being done to regulate and oversee workplace safety despite the fact that the failures involving known risks and hazards endanger workers every day. [Click here to read our blog.](#)

Pennsylvania Workers Sustain High Rate of Fatal Work Zone Injuries

According to data from the Bureau of Labor Statistics (BLS), an average of 123 construction workers die - and thousands more sustain serious injuries - in collisions that happen on active road construction sites each year. Certain states incur a greater number of annual work zone deaths than others. For example, Pennsylvania ranks as the state with the third-highest rate of work zone fatalities. By increasing effective injury prevention measures, such as installing traffic control devices and enforcing work zone speed limits, both employers and local governments do their part to keep workers safe. [Click here to read our blog.](#)


Number of Workplace Deaths Hit 12-Year High

According to the Bureau of Labor Statistics (BLS), 5,333 workers died from injuries they sustained while working in 2019. This is nearly a 2% increase from the year before. The bureau has not recorded



this many on the job deaths since 2007. The growing rate of fatal injuries marks a devastating surge in preventable workplace safety and health failures, endangering workers who already face numerous hazards due to the dangerous nature of their jobs. [Click here to read our blog.](#)

[To learn more about Workers' Compensation, click here.](#)

AUTO INSURANCE

Understanding Your Policy & Rights

This easy to use guide helps explain Pennsylvania Auto Insurance. Learn what kind of coverage you should have and how to best protect yourself if you are involved in an accident.

[Download your copy today.](#)



GALFAND BERGER PROVIDES USEFUL RESOURCES AND VIDEOS FOR MANY OF OUR PRACTICE AREAS.

To learn more about them, visit: www.galfandberger.com/resources or watch our videos, here: www.galfandberger.com/videos